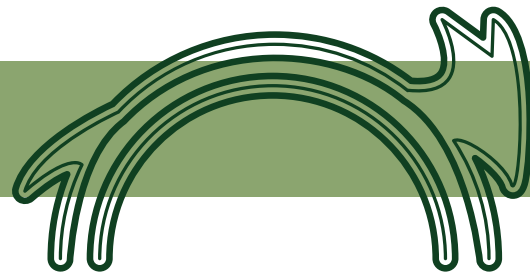


CLAREMONT STATION

**MULTI-USE SOCIAL SPACE CELEBRATES
LOCAL NATURE AND HISTORY**



DESIGN PROGRAM + INSPIRATION

One day Coyote saw a feather floating on the water. As it reached the island, it turned into an Eagle, which then spread its wings.

In 1860-61, the Pony Express brought news from the east coast through Orinda, up Fish Ranch Road and down Claremont Canyon on its way to San Francisco by ferry. From the late 1800's into the early 1900's, commercial development in the Canyon included a hotel and saloon rest stop.

Claremont Station will be a public gathering space that celebrates local nature and history with educational elements and plantings that reflect native environment and other nearby parks. Market booths and flexible open space will create lots of opportunities for community engagement.



OPEN + ASYMETRICAL SPACES MIRROR HILLS AND CANYON



STATUES NOD TO NATIVE LORE AND PROVIDE CASUAL PLAY AREAS



A GRAND OAK AS A CENTERPIECE



MARKET STALLS FOR FOOD AND FARMERS



GATHERING SPACE FOR EXHIBITS AND SHOWS



REPURPOSED REDWOOD BUS STOPS

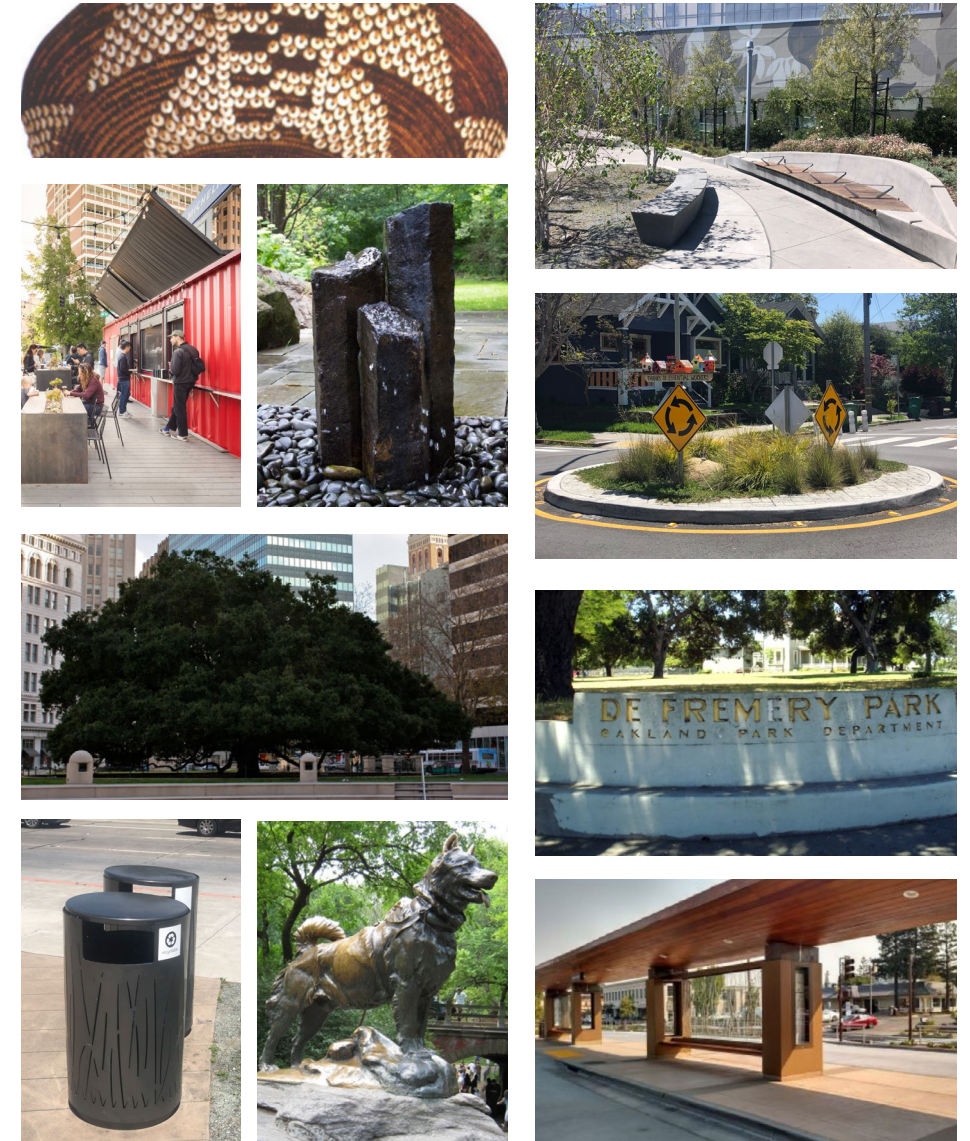


PONDLESS WATER FEATURE WILL REFILL WATER BOTTLES

COLOR PALETTE

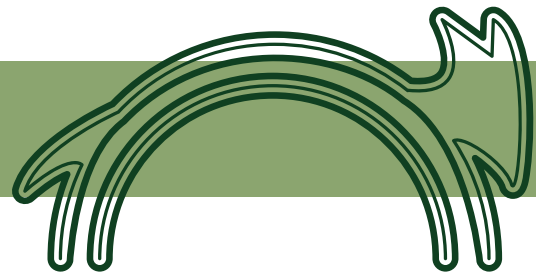


GOALS AND INSPIRATION

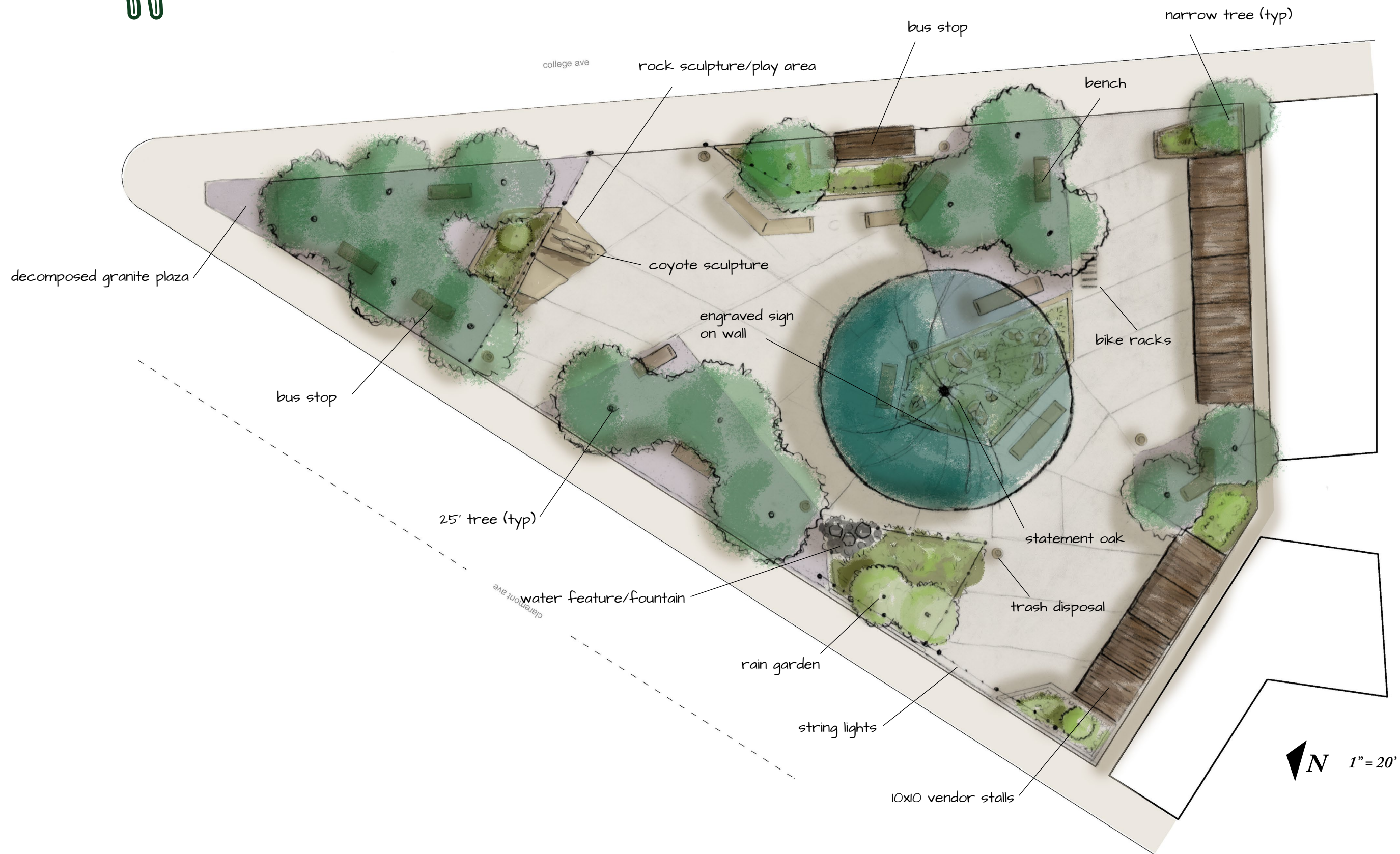


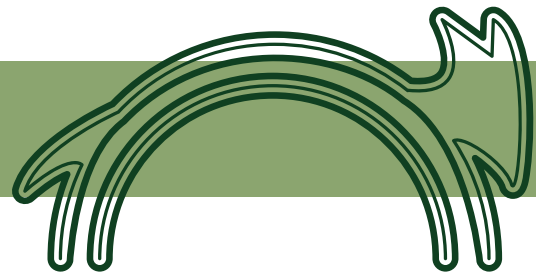
DESIGN CHARACTER

- We'll lean heavily on grasses and oaks to reflect local plant life and highlight plants that were important to native populations
- Asymetric hardscape and lines mirror natural landscape
- Open spaces leave flexibility for community use
- Monochromatic planting palette shows off hardscape and installations
- Shaded areas with trees over gravel inspired by European Plazas



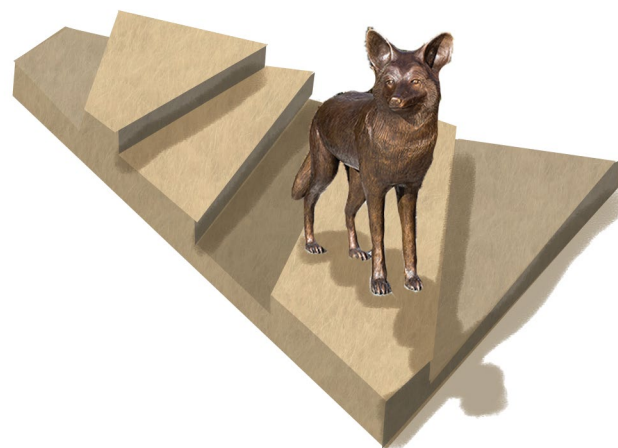
PRELIMINARY PLAN



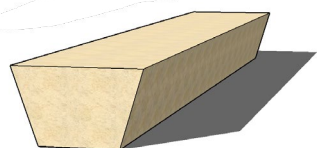


DETAILS + 3D VIEWS

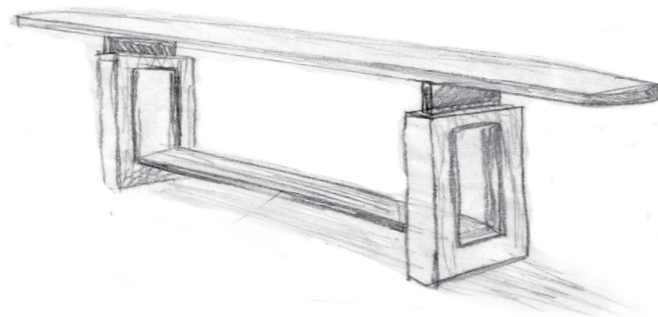
*play structure detail:
concrete blocks with bronze sculpture*



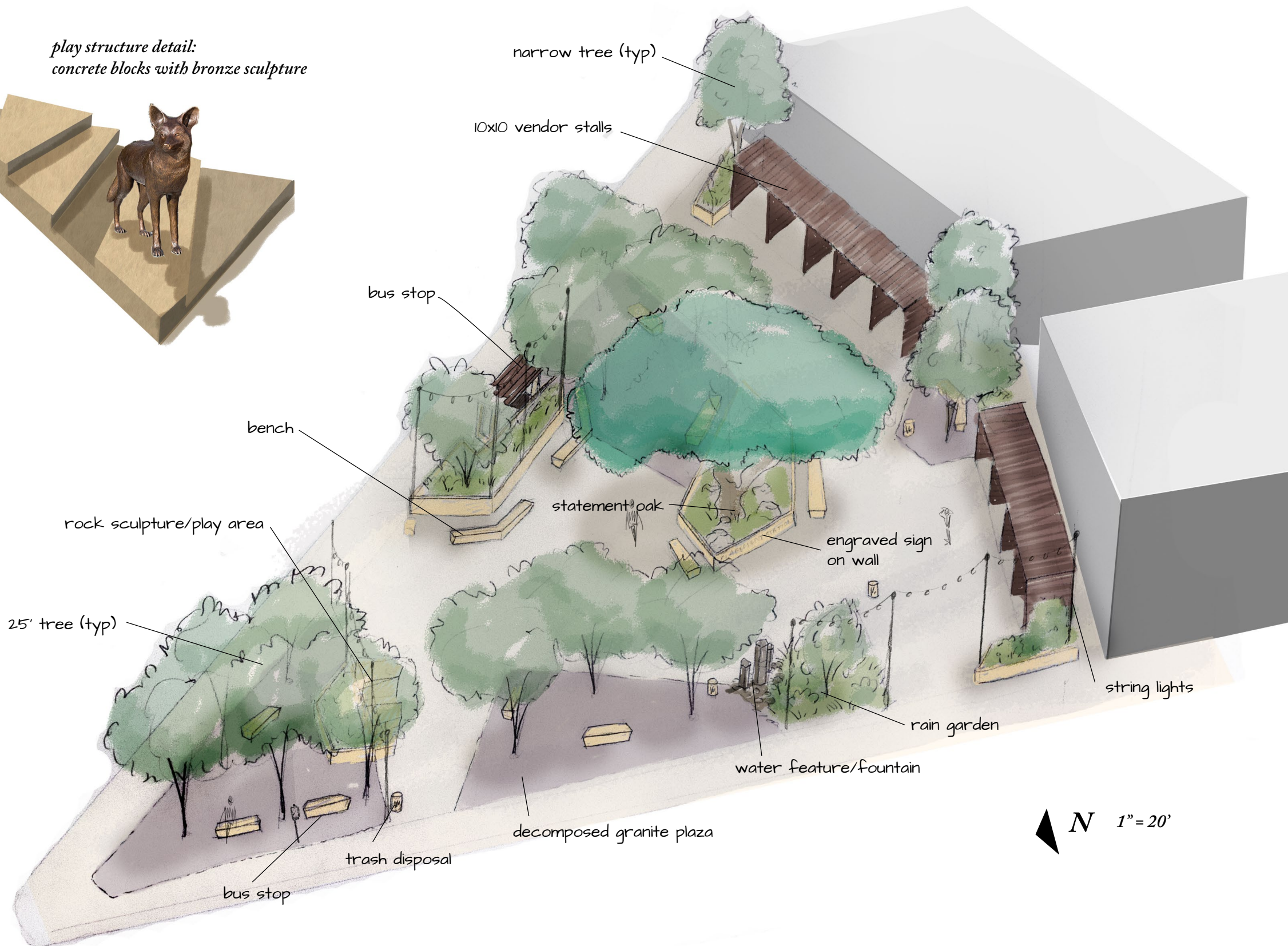
*pondless water feature detail:
basalt columns with water bottle refill station*



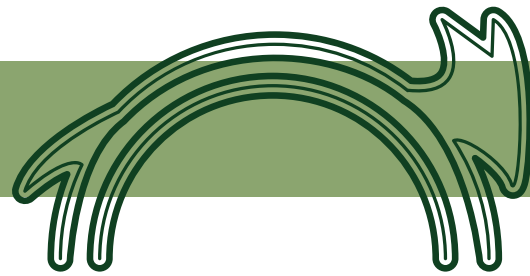
bench detail: concrete



*bus stop preliminary sketch:
concrete and redwood*



▲ N 1" = 20'



ENVIRONMENTAL PLAN

POTENTIAL PLANT PALETTE

Botanical Name	Common Name	Zone	PF	Irr Group	WELO Landscape Area
TREES					
<i>Cercis occidentalis</i>	Western Redbud	17	M/L	2	1
<i>Lyonothamus floribundus</i>	Catalina Ironwood	17	M/L	2	2
<i>Quercus agrifolia</i>	Coast Live Oak	17	M/L	2	2
SHRUBS/PERENNIALS					
<i>Rhus Ovata</i>	Sugar Bush	17	L/VL	2	2
<i>Fremontodendron californicum</i>	Flannel Bush	17	L	2	2
<i>Diplacus aurantiacus</i>	Sticky Monkey Flower	17	L/VL	2	1
<i>Berberis 'Golden Abundance'</i>	Golden Abundance Barberry	17	M/L	2	3
<i>Salvia leucantha 'White Mischief'</i>	White Mischief Mexican Sage	17	M/L	2	3
<i>Viguiera laciniata</i>	San Diego County Sunflower	17	L/VL	2	1
GRASSES + GROUNDCOVER					
<i>Baccharis pilularis 'Pigeon Point'</i>	Pigeon Point Coyote Brush	17	L/VL	2	1/2
<i>Iva hayesiana</i>	Hayes Iva	17	M/L	2	1/2
<i>Muhlenbergia rigens</i>	Deer Grass	17	M/L	2	3
RAIN GARDEN					
<i>Festuca californica</i>	California Fescue	17	H/M	2	SLA
<i>Juncus textilis</i>	Basket Rush	17	H/M	2	SLA
<i>Sisyrinchium californicum</i>	Yellow Eyed Grass	17	H/M	2	SLA
<i>Berberis aquifolium</i>	Oregon Grape	17	H/M	2	SLA
<i>Cornus sericea</i>	Creek Dogwood	17	H/M	2	SLA

WATER USEAGE (IN GALLONS)

MAWA CALCULATIONS	ETo	CF	MPF	LA	SLA	Gal/Yr	
$(Eto \times 0.62) \times [(0.45 \times LA) + (0.55 \times SLA)]$							
Landscape Area	32.9	0.62	0.45	7430	585	68,522	
Maximum Allowable Water Use (MAWA)						68,522	
ETWU CALCULATIONS	ETo	CF	PF	IE	ETAF	LA	Gal/Yr
$(Eto \times 0.62) \times (PF/IE) \times LA$							
Hydrozone 1 (dry sun)	32.9	0.62	0.35	0.81	0.4	4300	37,900
Hydrozone 2 (dry shade)	32.9	0.62	0.35	0.81	0.4	2280	20,096
Hydrozone 3 (moist partial sun)	32.9	0.62	0.45	0.81	0.6	470	5,326
Hydrozone 4 (SLA/edibles)						585	585
Estimated Total Water Use (ETWU)						7635	63,907

