



BUCKEYE COMMONS

Sustainable Urban Community



03/04/2020



BUCKEYE COMMONS

Sustainable Urban Community

Sculptural trees surrounded by wild native shrubs are accented by select colorful statement plants to blend with compliment local landscape.

Rain Gardens collect over 5500 gallons of runoff in a 1" storm.

Thoughtful layouts make the most of 500ft² tiny houses for college faculty.



2 - 8x20' shipping containers with redwood accents and large back deck

Existing Platanus racemosa (typ)



Aesculus californica

6' Privacy Fence

Fremontadendron

Reading Garden

Rain Garden

5' retaining wall

Sunny Public Lawn



scale: 1" = 10'



PLAN VIEW



scale: 1" = 10'



6' Privacy Fence

Existing *Platanus racemosa* (typ)

Rain Garden

Cercis occidentalis

6' Privacy Fence

Raised Bed Area

House 2

House 2 Private Area

House 3

House 4

House 4 Private Area

Raised Bed Area

Lemon tree

House 3 Private Area

Sunny Public Lawn

Outdoor Kitchen/Gathering Area

Rain Garden

Aesculus californica (typ)

House 1

Reading Garden

Native Meadow

House 1 Private Area

Privacy Hedge

POTENTIAL PLANT PALLETE

Botanical Name	Common Name	Zone	PF	Irr Group
TREES				
<i>Platanus racemosa</i>	Western Sycamore	17	H/M	2
<i>Aesculus californica</i>	California Buckeye	17	L/VL	2
<i>Lyonothamus floribundus</i>	Catalina Ironwood	17	M/L	2
<i>Cercis occidentalis</i>	Western Redbud	17	M/L	2
TALL SHRUBS				
<i>Berberis stenophylla</i>	Barberry	17	M/L	2
<i>Salix lasiolepis</i>	Arroyo Willow	17	H/M	2
<i>Lavatera thuringiaca</i>	Tree Mallow	17	M/L	1
<i>Fremontodendron californicum</i>	Flannel Bush	17	L	2
<i>Philadelphus lewisii</i>	Western Mock Orange	17	M/L	2
<i>Brugmansia</i>	Angel's Trumpet	17	M	1
MED SHRUBS				
<i>Ballota Pseudodictamnus</i>	False Dittany	17	M/L	2
<i>Teucrium fruticans</i>	Bush Germander	17	M/L	2
LOW PLANTS				
<i>Nassella Lepida</i>	Foothill Needlegrass	17	L/VL	2
<i>Clarkia unguiculata</i>	Clarkia	17	M	1
<i>Penstemon pinifolius</i>	Beard Tongue	17	L/VL	2
<i>Sisyrinchium bellum</i>	Blue-eyed Grass	17	M/L	2
<i>Muhlenbergia rigens</i>	Deer Grass	17	M/L	2
VINES				
<i>Vitis californica</i>	California Grape	17	H/M	2
RAIN GARDEN				
<i>Juncus effusus</i>	Common Rush	17	H	1
<i>Adiantum aleuticum</i>	Western Five Fingered Fern	17	H	1
<i>Carex pansa</i>	California Meadow Sedge	17	M	1
<i>Woodwardia fimbriata</i>	Giant Chain Fern	17	M/L	2
<i>Calamagrostis x acutiflora</i>	Feather Grass	17	M	1
<i>Rosa californica</i>	California Wild Rose	17	M/L	2
<i>Iris douglasiana</i>	Douglas Iris	17	H/M	2



RUNOFF + RAIN GARDENS

AREA 1 (SOUTH SIDE)

Total Site Area

8925 ft²

Total runoff in 1" storm

5590 ft²

RAIN GARDEN 1

Area **324 ft²**

Depth **1.75 ft²**

Capacity **4200 gal**

AREA 2 (NORTH SIDE)

Total Site Area

2750 ft²

Total runoff in 1" storm (gal)

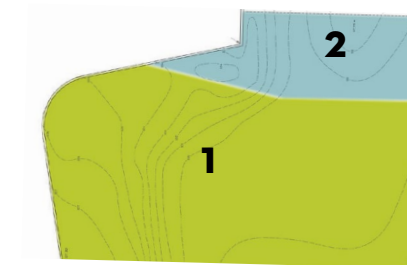
1720 ft²

RAIN GARDEN 2

Area **145 ft²**

Depth **1.25 ft²**

Capacity **1300 gal**



ROOF RUNOFF COLLECTION

Area **1720 ft²**

1" Storm (gal) **1075 gal**